

## Los Angeles Wheelmen VP Report - May 19, 2026

Hello All:

We were riding "Turnbull Revisited" last Sunday and I pick up on the word "Turn." I've already used "Turn, Turn, Turn" for this ride but here is another one. I thought it had the word "turn" in the title, but it "turns" out that it doesn't.

[https://www.youtube.com/watch?v=KqBZAxCfWHA&list=RDKqBZAxCfWHA&start\\_radio=1](https://www.youtube.com/watch?v=KqBZAxCfWHA&list=RDKqBZAxCfWHA&start_radio=1)

**Sunday:** As mentioned, we were riding "Turnbull Revisited" which starts from Pico Park. Despite my best intentions to show up, I once again wimped out. But there were 4 riders and **Phil Withworth** took this selfie.



That's **Mario Solano**, **Chris Hedberg** (getting out of the car), **Edwin Dair** and **Phil**. Later, at lunch, Phil took another shot of the group which shows Chris a bit better:



I notice that they still have their jackets on at lunch, so it must have been a bit cooler than I thought, but still, it looks like a nice day. Based on Phil's Strava post, it appears they all did the medium route. On the return this took them along the bike path on the top of the Santa Fe Dam. Apparently the annual Renaissance Faire was taking place and Phil took this shot of the parking lot below the dam.



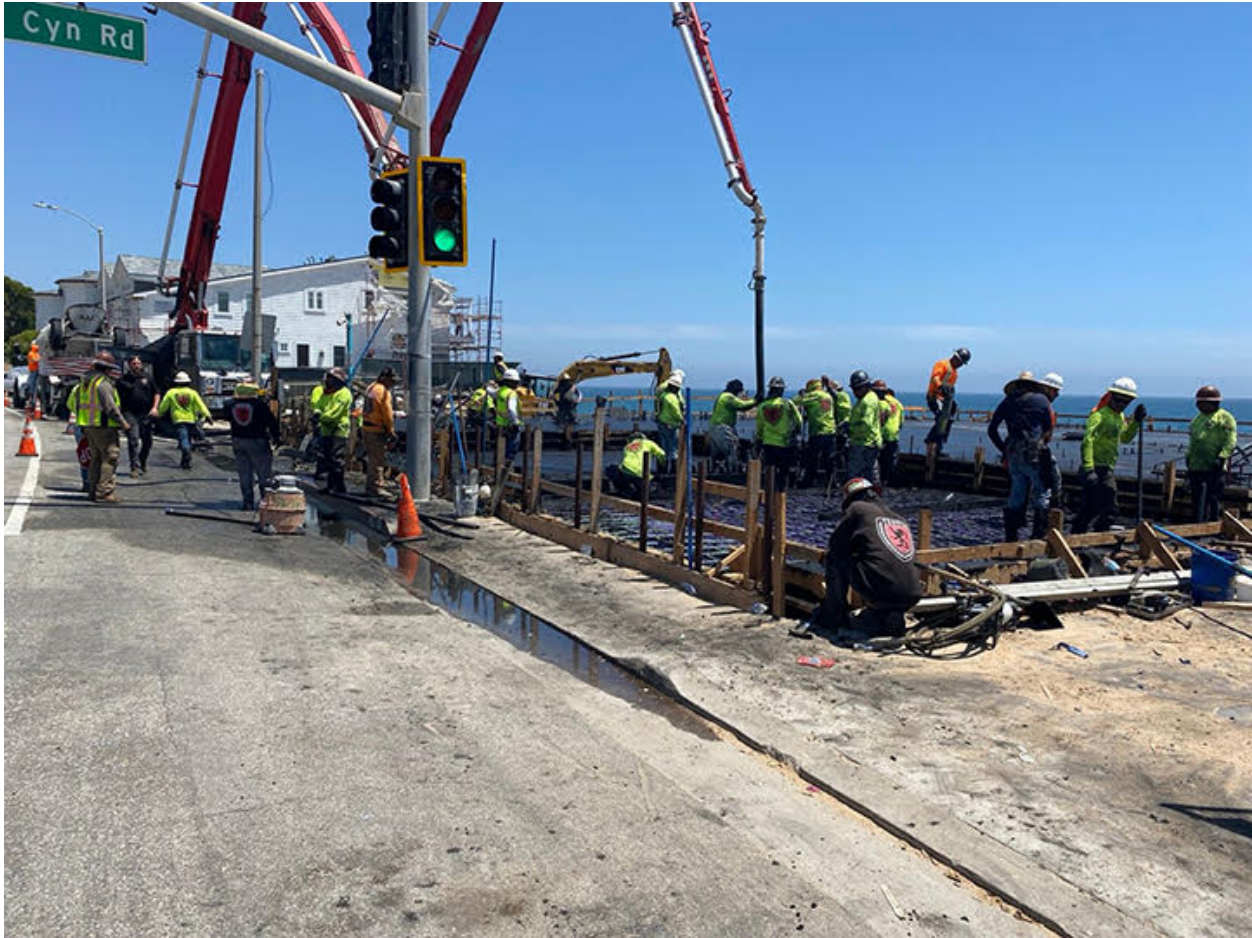
Quite a crowd. I'm a little bit surprised how popular it still is. It's been going on for decades and I never see any ads or news stories about it. How do all these people even find out about it? Well, I've never been, so maybe I should go next year.

**This Week:** This Sunday we will be riding "Revel the Rollies From Redhill" which starts from Pine Tree Park in Tustin. This is the original "Revel the Rollies" ride (we have 4 of them). All the routes roam around southern Orange County and of course the longer routes do more roaming than the shorter routes. As the name suggests, there are hills, but nothing too bad except for one climb on the long route. This is a mile long stretch up Pacific Island Dr. near Dana Point. That one is a killer -- well, that's how I remember it. Once again I hope to turn up for the short route, but no promises. E-mail me if you plan to show up -- that might spur me on to join you.

**Cycling Quote of the Week:** "Riding a bicycle is the closest you can get to flying." — Robin Williams That's a nice thing to say, but then again. I think Robin Williams did a lot of drugs.

**Parting Shot:** Nothing else to discuss tonight. Here are a couple of shots Phil Whitworth took on his weekly rides out to Malibu.





According to Phil this is the first house being rebuilt along the coast in the burn area. They were pouring the foundation today. I'm a little surprised anyone is rebuilding along the coast. If the next fire doesn't get them, the rising ocean will. It's just a matter of time.

See You On The Road

Rod Doty, VP

Attachments area

Preview YouTube video Total Eclipse of the Heart (Radio Version)

Preview YouTube video Total Eclipse of the Heart (Radio Version)

