

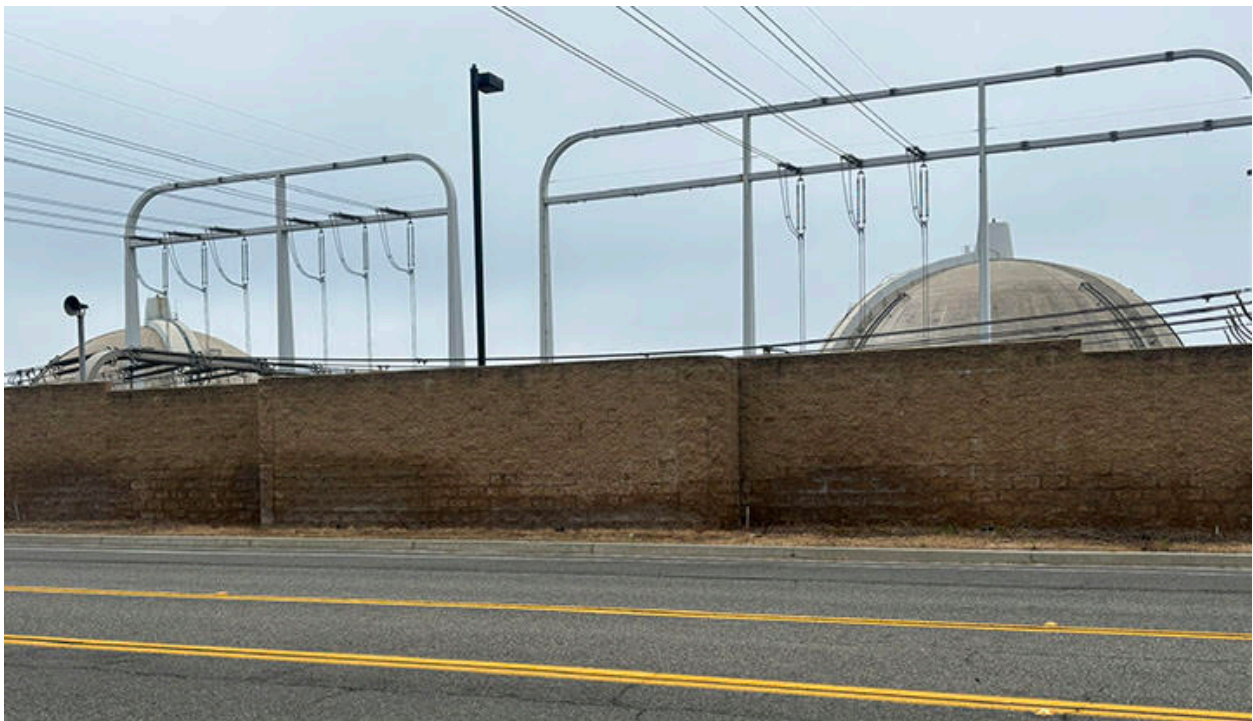
Los Angeles Wheelmen VP Report - March 24, 2026

Hello All:

Sunday's ride down to Capistrano was timed to coincide with the return of the swallows, so there is really only one song to go with tonight's report

<https://www.youtube.com/watch?v=BXyKe43pE2Y>

Sunday: We were riding "Capistrano Caper" which started in Capistrano and rode to points south. There were only 4 of us at the ride. That's about what I expected although I had hoped for more. Apparently Phil had trouble with his camera or Strava that day. I know he took a shot of the four of us, but couldn't send it to me. Anyway, the four were **Phil Whitworth, Mario Solaano** and **David Nakai** who rode the long route and me, who rode the short. The short only took me as far south as San Onofre so I took this shot to prove I made it that far.



There's a better shot of the domes further back on the road, but this location is closer so I took my picture from here as a change of pace. The point of the ride was to time it with the return of the swallows and I had hoped to get a shot of a swallow. Phil, David and I all had the same idea to take a shot of the swallows attached to the fence along the freeway in case we didn't see any of the real thing at the mission. Here is Phil's shot with Mario pointing to a swallow:



As it turned out, we didn't see any real swallows. When I got to the mission at the end of the ride, it turned out it cost \$15 for a senior to go in and look. I almost didn't go in -- particularly when they told me I had to lock my bike up outside the mission. They could at least have a small bike parking area inside the mission. But I did go in. The woman at the entrance told me the swallows usually weren't there during the afternoon -- out hunting insects I guess -- and I wouldn't see any. But there were the nests. These are cliff swallows and they build a very unique nest.



The barn swallows I was familiar with in Illinois just built a cup shaped nest attached to a wall. I had paid my \$15 so I felt I should walk around a little, but I was so tired I didn't go very far. I did take this shot of the inner courtyard



It seemed nice. Maybe next time I'll look around more.

This Week: This Sunday is our annual Awards Lunch. As usual, we will have a short ride prior to the lunch. There is only one route which takes us from the lunch location on a loop downtown and back. I added a stop on the route this year to view the Lucas Museum of Narrative Art which is due to open later this year. The route is short to get everyone back in time for lunch. There is one major climb, but it is optional. Once back at the start we will all chow down on lunch and then there will be the presentation of this year's awards. Come see who will receive the coveted Jack Flynn Award this year. I'm still awaiting a lot of RSVPs.

So, just in case you missed it, here is the entire invitation that was sent out a couple of weeks ago.

INVITATION

LOS ANGELES WHEELMEN AWARDS LUNCH

Sunday, March 29th -- Noon

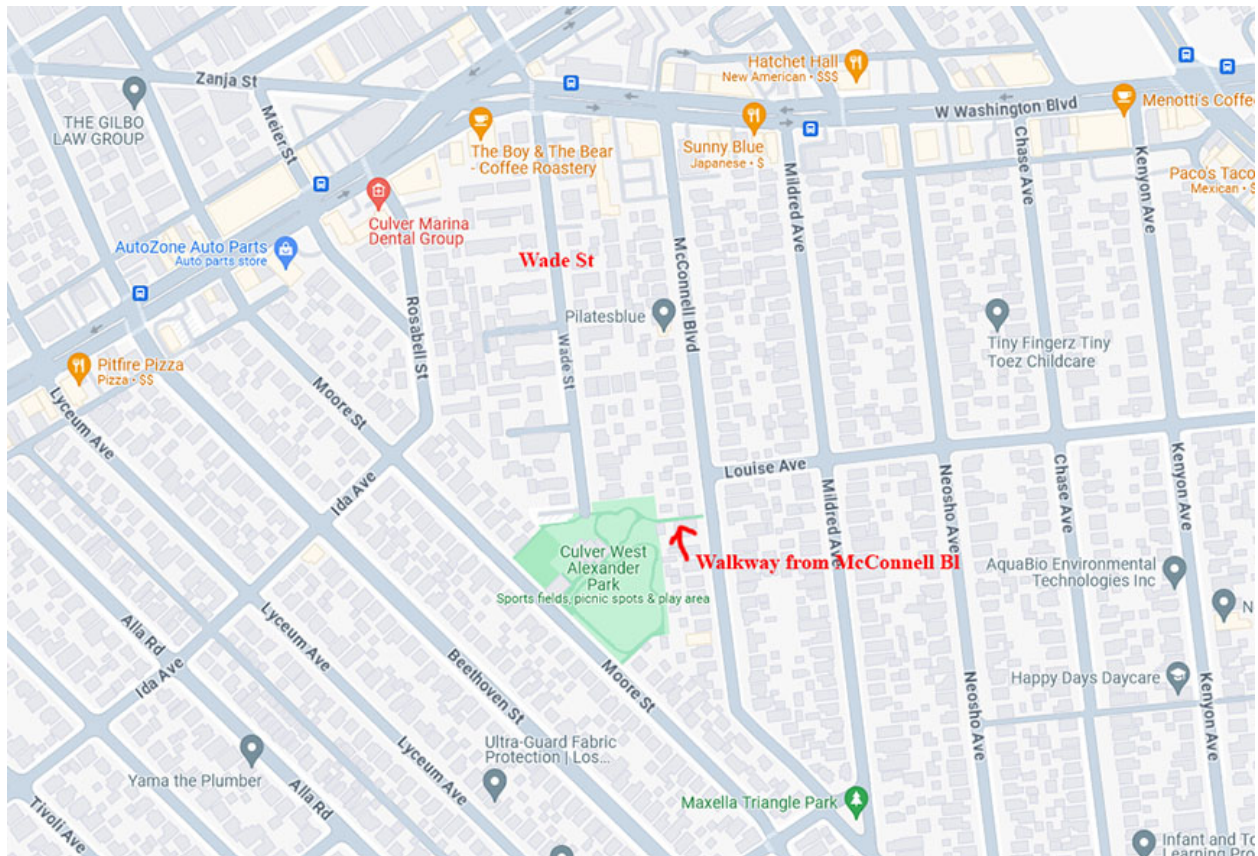
Come One, Come all to our annual awards lunch. Enjoy a delicious lunch followed by the presentation of awards for various achievements by members in the past year including the Jack Flynn award. And of course, there will be cake! A good time will be had by all. Here is a chance to get together with members you don't often see. We hope to see you all there. If you plan to attend, please RSVP to roddoty@roadrunner.com before Wednesday, March 25th so we will know how many to expect

As usual, there will be an optional short ride starting at 8:30 from the lunch location (see below) Additional information regarding the ride will be available on the club web site.

LOCATION

This year's lunch and pre-ride will be at CULVER WEST ALEXANDER PARK (same as last year) located at 4162 Wade Ave., Culver City, 90066. The park is at the end of Wade Ave. which is a dead end street which can only be accessed from Washington Blvd. Take Washington Blvd

west from the 405 to a few blocks past Centinela Ave. Turn left on Wade Ave to end. **NOTE:** there is **VERY LIMITED** parking at the park and on Wade Ave. You can also park on Moore St on the west side of the park or on McConnell Blvd on the east side of the park (and access the park through the walkway. See the map below. **We recommend parking on Moore Street**



SEE YOU THERE!

Parting Shot: Here are a couple of shots Phil took today on his usual Tuesday ride out to Malibu.





The first is where the former Will Rogers home stood before the fire. That's a big loss. The second is of the polo field, which looks like it was unharmed by the fire.

See You On The Road

Rod Doty, VP

Attachments area

Preview YouTube video Pat Boone - When the Swallows Come Back to Capistrano (1957)

Preview YouTube video Pat Boone - When the Swallows Come Back to Capistrano (1957)

