

Los Angeles Wheelmen VP Report - March 5, 2024

Hello All:

Sunday's ride was rained out again, so another rain song is appropriate for our theme music tonight. Fortunately, there are a lot of rain songs to choose from. Here's one I always liked, although if you follow the lyrics, it doesn't seem they are talking about literal rain. Makes for a nice election day song too.

https://www.youtube.com/watch?v=JNrsJNtd_bc

Sunday: The ride was "Amazing Maze" which we were re-running because it was rained out in January. I really hoped to ride and was getting ready to go when I got a text from **Phil Whitworth**. He and **Mario Solano** had decided the rain threat was too great and weren't going. If they weren't going, I decided it was a long drive down to Tustin just to find no one there, so I didn't go either. It turns out **David Nakai** did go, but when no one else was there, he did his own ride and not the Amazing Maze route. It also turns out that **Ben King** had decided to meet the club riders in Santiago Canyon, but of course he never saw anyone. He reported rain, hail and wind, so I think the rest of us made the right decision. Phil did send me a photo of his bike to show he had gotten it ready to ride that morning:



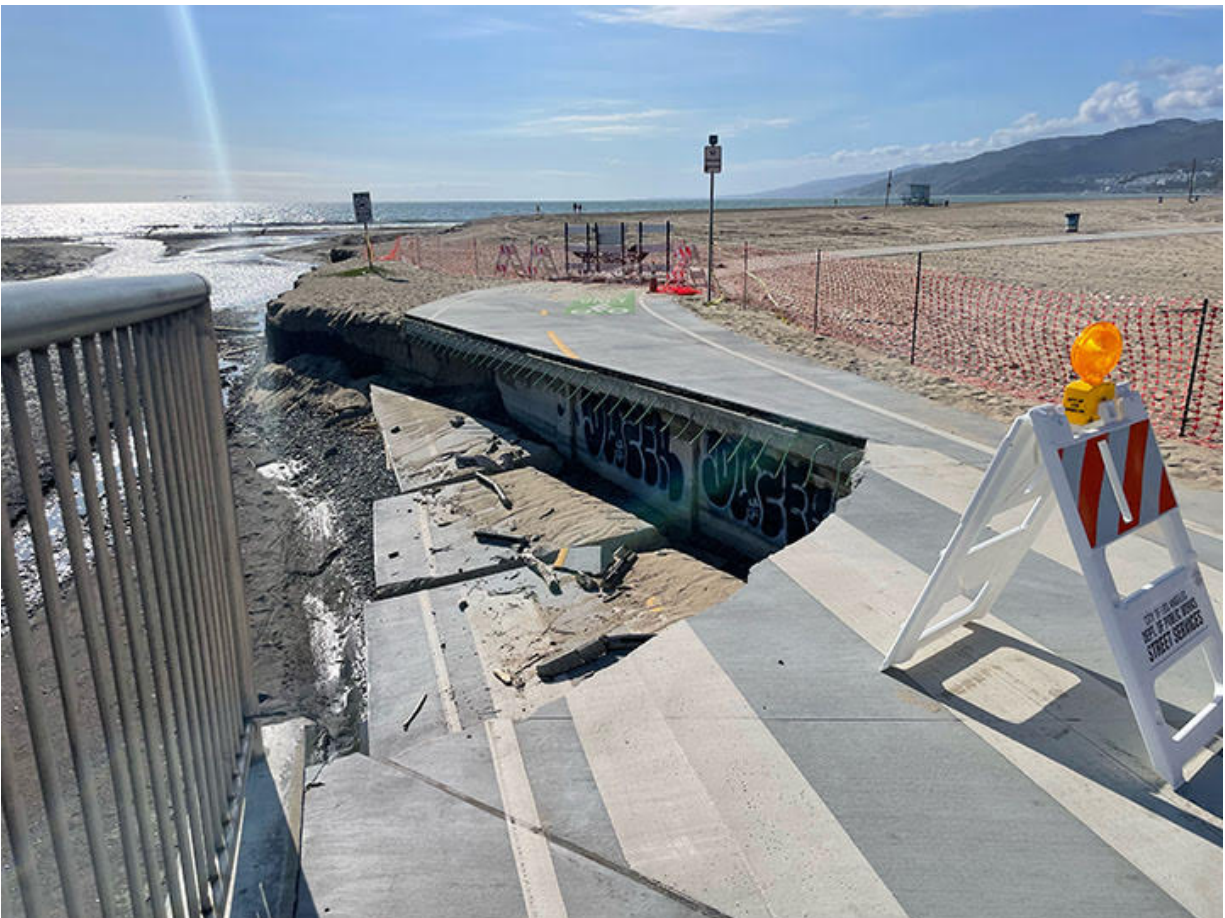
Note the route sheet in a plastic bag, the rear fender and the towel under the top tube.

Change of Schedule: So that's two times this ride has been rained out this year and I was going to let it go until next year. But then it was pointed out to me that the ride I had scheduled for March 17th would conflict with the LA Marathon. I checked it out. I was thinking maybe all we had to do was cross the marathon route at some point and maybe we could do that. But it turns out our route and the marathon route actually run together for about half a mile. That would never work so I decided to schedule a different ride for the 17th. But what ride? I considered a few different ones, but then thought "Hey, why not just try to get in "Amazing Maze" for a third time. Third time is the charm, so they say. So, please note the following:

CHANGE OF SCHEDULE FOR MARCH 17: The ride originally scheduled for March 17 in the schedule previously sent to everyone has been changed to "The Amazing Maze" Details and route sheets will be found in the usual place on the club web site.

This Week: This Sunday we will be riding "Reseda Park - Phase II" which starts (no surprise) at Reseda Park in Reseda. These rides are somewhat similar to the century rides we rode only a few weeks ago. All the routes head west from the start. The short stays in the Valley while the long and medium head out to Simi Valley. The long continues on all the way to Moorpark before returning back while the medium doesn't go beyond Simi Valley. The long and the medium both do Santa Susana Pass both directions, but those are the only major hills on either route. I made it up Turnbull two weeks ago, so I think I might try Santa Susana. The weather is supposed to be good for once, so I hope to see some of you there.

Bike Path Damage: David Williams send the following photo of damage to the beach bike path. This is north of the Santa Monica Pier at the point where the pedestrian tunnel crosses under PCH to West Channel Rd.



Looks like this could take a while to fix. Fortunately, we don't have many club rides which take us that far north on the bike path.

Patch of the Week: With St. Patrick's Day coming up, I thought I would pull this

one out of my collection.



I believe this was run by the Bicycle Club of Irvine, but I couldn't find any reference to it on their web site or the web in general, so it would seem it isn't held any longer. It was an interesting century. It was made up of 3 or 4 loops which formed a clover or shamrock shape. If you did all the loops, you got in a century, but you could choose to do fewer loops for various other distances. At the end of each loop you were back at the start, so that was the only rest stop. That made it easy for the club to support since it only had to staff one rest stop all day. You could also choose the order in which you did the loops. It started in the Turtle Rock area of Irvine so there were a few hills, but nothing too bad.

Parting Shot: I often check out Strava to see what rides other members are doing. This is the map of a 13 mile ride posted for **Phil Whitworth** last Saturday.



When you zoom in, you get this:



I asked Phil how he did this and he didn't know. He said he hadn't even ridden on Saturday. Occasionally, while my bike is stationary, Garmin will show that it jumped away and then came back. I've been told this is because of some sort of interference with the satellite connection which briefly makes the Garmin think it is somewhere else. But that has rarely happened and when it has happened, it was only one jump. I've never seen anything like this. Has anyone else experienced this?

See You On The Road

Rod Doty, VP

Attachments area

Preview YouTube video Creedence Clearwater Revival: Who'll Stop the Rain [Lyrics]

